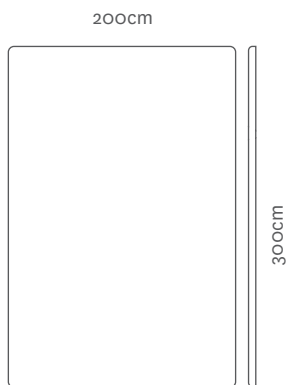




# lounge collection

- space:** Create your own space to escape. Lay down. Nestle into the lush wool pile. A place to relax, chill out and unwind
- design elements:** The warm and luxuriously soft texture of wool is contrasted with a natural suede leather creating a perfect resting place
- origin:** New Zealand high country stations and lowland farms
- material:** New Zealand curly woolskin. Suede cow-hide backing and seam
- texture:** Luscious 25mm 'deep & curly' wool pile
- designer:** Monika Conway – Chalk Design NZ
- taste:** Rippon Central Otago Pinot Noir
- listen:** Ladyhawke

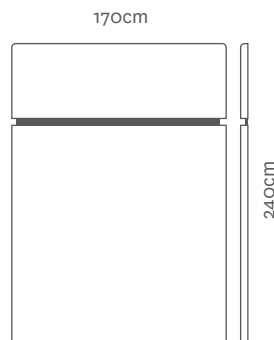
## Lounge Rug Sizes:



Lounge Rug - Triple  
(seamless)

CODE: DRSCWS20X30CS

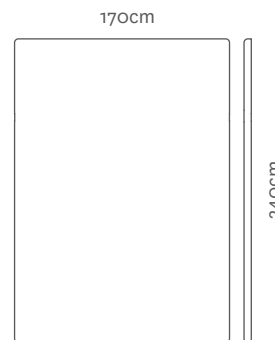
SHIPPER QUANTITY: 2 pieces



Lounge Rug - Double

CODE: DRSCWO17X24CS

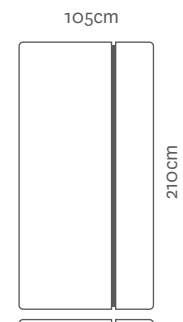
SHIPPER QUANTITY: 4 pieces



Lounge Rug - Double  
(seamless)

CODE: DRSCWS17X24CS

SHIPPER QUANTITY: 4 pieces



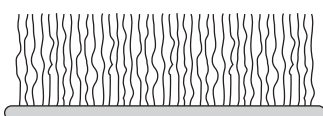
Lounge Rug - Single

CODE: DRSCWO10X21CS

SHIPPER QUANTITY: 4 pieces



25mm 'deep & curly' wool pile



## Colours:



White



Matuki



Kanuka



Black

